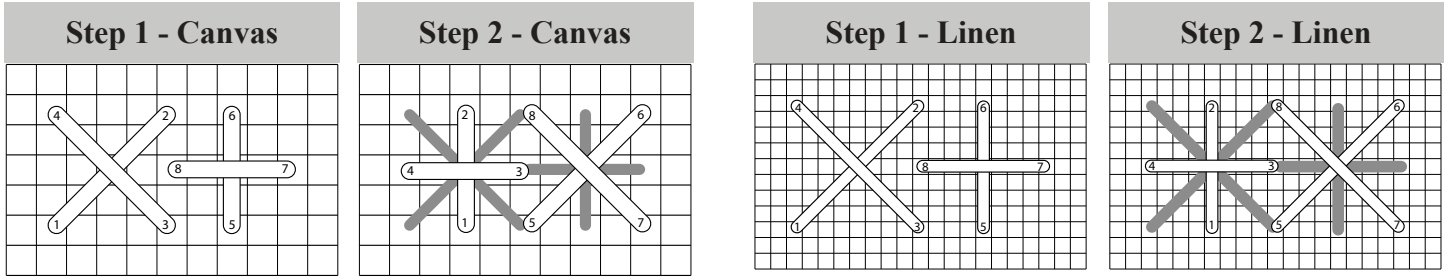


SBTS Chapter Challenge 2010 - A Study in Values

Area 5 - Reverse Double Cross

Using DARK VALUES of both color families, work the *Reverse Double Cross* in AREA 5. The stitch is repeated 16 times in AREA 5, as illustrated in the design area diagrams. Alternate the starting stitch on each row: start row 1 with X as the beginning of Step 1 and start row 2 with + as the beginning of Step 1; continue alternating for the remaining rows. The blue in the design area diagrams shows the Step 1 threads of each stitch.



Canvas Design Area

Linen Design Area

