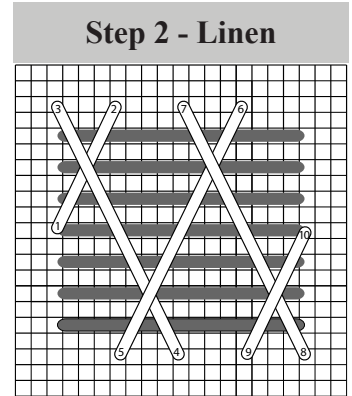
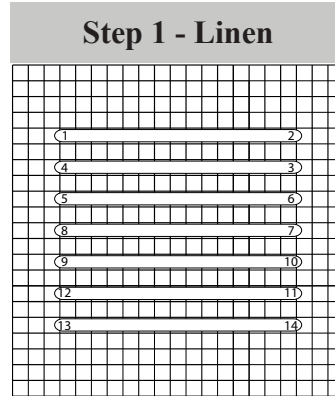
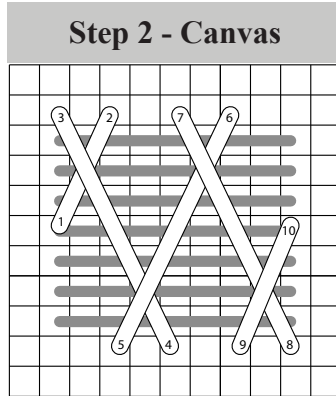
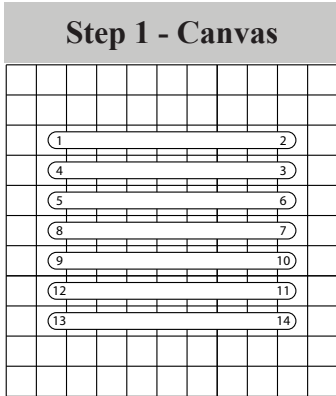


# SBTS Chapter Challenge 2010 - A Study in Values

## Area 4 - Herringbone Couching

Using LIGHT VALUES of both color families, work the *Herringbone Couching* in AREA 4. The stitch is repeated 5 times in AREA 4, as illustrated in the design area diagrams, once across the top and four times down the side. The threads being couched with the herringbone stitch are laid the entire width of the area being filled and the herringbone stitch is worked continuously across the entire width (repeat stitches 5-6 and 7-8 across, then end with stitch 9-10).



Canvas Design Area

Linen Design Area

